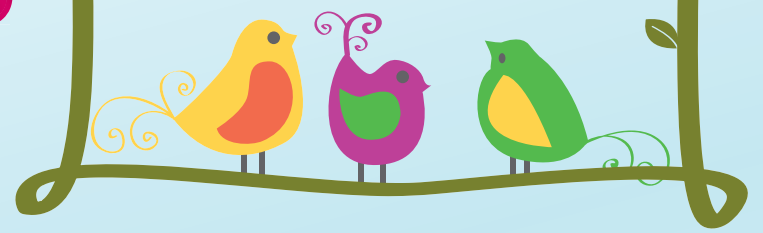


COMPARATIVE LITERARY STUDIES

COURSES

SQ22



200-LEVEL

COMP_LIT 201-0-20

Intro to World Literature: Planetary Readings
E. Mwangi | MW 11am-12:20pm

COMP_LIT 202-0-20

/ ASIAN_LC 240-0-20 / ENVR POL 390-0-32
The End of a World: South Korean Fictions, Films, and
Webtoons of Disaster
J.E. We TTh | 12:30-1:50pm

300-LEVEL

COMP_LIT 301-0-20 / CLASSICS 340-0-1

Greek and Roman Drama:
Ancient Greek Drama and Its Reception
M. Hopman | TTh 2-3:20pm

COMP_LIT 301-0-21

/ ENGLISH 369-0-20 / ENVR POL 390-0-28
Studies in World Literature: Animal, Animism, Animality
E. Mwangi | MW 12:30-1:50pm

COMP_LIT 303-0-20

/ GERMAN 346-0-1 / JWSH_ST 396-0-1
Figurations of Jesus in German-Jewish Literature
D. Bischoff | MW 3:30-4:50pm

COMP_LIT 303-0-21 / ASIAN_LC 322-0-20

Finance Fictions: The Japanese "Economic Novel"
P. Noonan | TTh 3:30-4:50pm

COMP_LIT 305-0-20 / RTVF 315 / SAI 400

Studies in Film Media and Visual Culture: Audio Drama
N. Verma | W 9-11:50am

400-LEVEL

COMP_LIT 412-0-20

Theory Sequence: Translation in Theory and Practice
L. Brueck | T 1-3:50pm

COMP_LIT 481-0-20 / SLAVIC 441-0-1

Visualizing Radicalism
N. Gourianova | Th 1-3:50pm REMOTE

COMP_LIT 202-0-21 / SLAVIC 211-1-20

20th C Russian Literature: Topic TBD
N. Gourianova | TTh 11am-12:20pm

COMP_LIT 202-0-22 / SLAVIC 261-0-1

Heart of Europe: Poland in the Twentieth Century
C. Cavanagh | TTh 12:30-1:50pm

COMP_LIT 305-0-21 / PORT 380-0-1

The Brazilian Documentary Tradition in Literature & Film
F. Neves | TTh 11am-12:20pm

COMP_LIT 305-0-22

/ ASIAN_LC 224-0 / RTVF 351-0-20
Japanese Cinema II
P. Noonan | TTh 2-3:20pm

COMP_LIT 307-0-20

/ ASIAN_LC 340-0-20 / GNDR_ST 341-0-20
Feminist, Queer, Crip: South Korea and Its Discontents
J.E. We | TTh 3:30 PM-4:50pm

COMP_LIT 320-SA-20 / GERMAN 322-0-1

Kafka's Uncanny "Animals"
S. Weber | MW 11-12:20pm

COMP_LIT 390-0-20

/ JWSH_ST 266-0-2 / GERMAN 266-0-2
Images of the Shtetl
M. Moseley | TTh 3:30-4:50pm

COMP_LIT 390-0-21

/ MUSICOL 343-0-1 / MUSICOL 443-0-1
Shakespeare and Music
L. Austern | MW 11am-12:20pm

COMP_LIT 486-0-20 / FRENCH 492-0-20

The Politics of Seduction and Consent: Literature,
Psychoanalysis and Philosophy
A. Ricciardi with I. Alfandary via Zoom | MTh 2-3:30pm

COMP_LIT 488-0-20 / PHIL 415-0-20

Studies in French Philosophy: Biopolitics
P. Deutscher | TW 5-7:50pm

